

**Homework task 3**

**Task A**

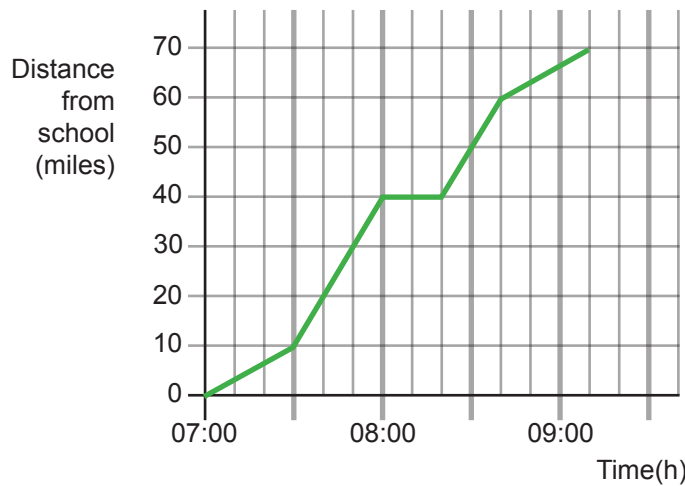
1 Sketch a graph to represent this story. Remember to label the axes.

*The spaceships came down rapidly through the atmosphere until they were over Manford City.*

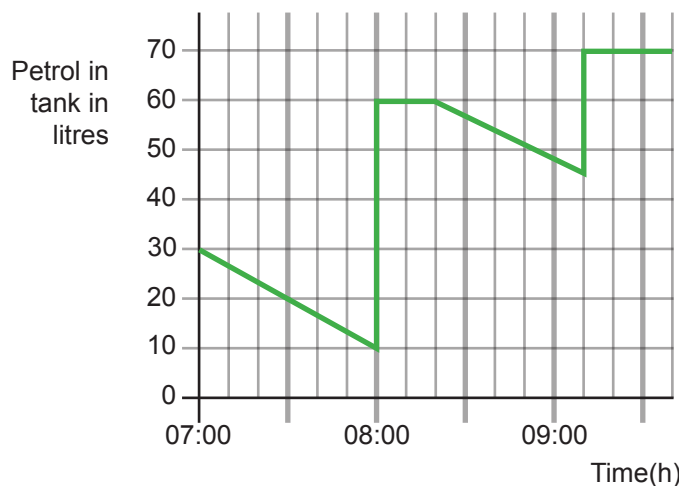
*They hovered overhead for several minutes before descending slowly to the ground.*

**Task B**

2 This graph of the bus journey from school to Manford Car Park shows the distance travelled.



This graph of the same journey shows the amount of fuel in the petrol tank of the bus.



- What time was it when the bus reached the Car Park in Manford?
- Between what times did the bus have less than 20 litres of fuel in its tank?
- The driver bought petrol at the Motorway Service Station and the Car Park Garage. At which of these did he buy more fuel?
- Estimate the total amount of petrol that the bus driver bought.
- How much petrol did the bus use over the entire journey?